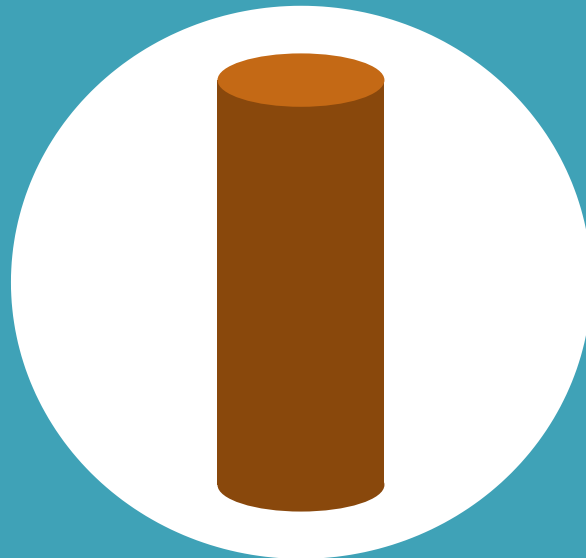
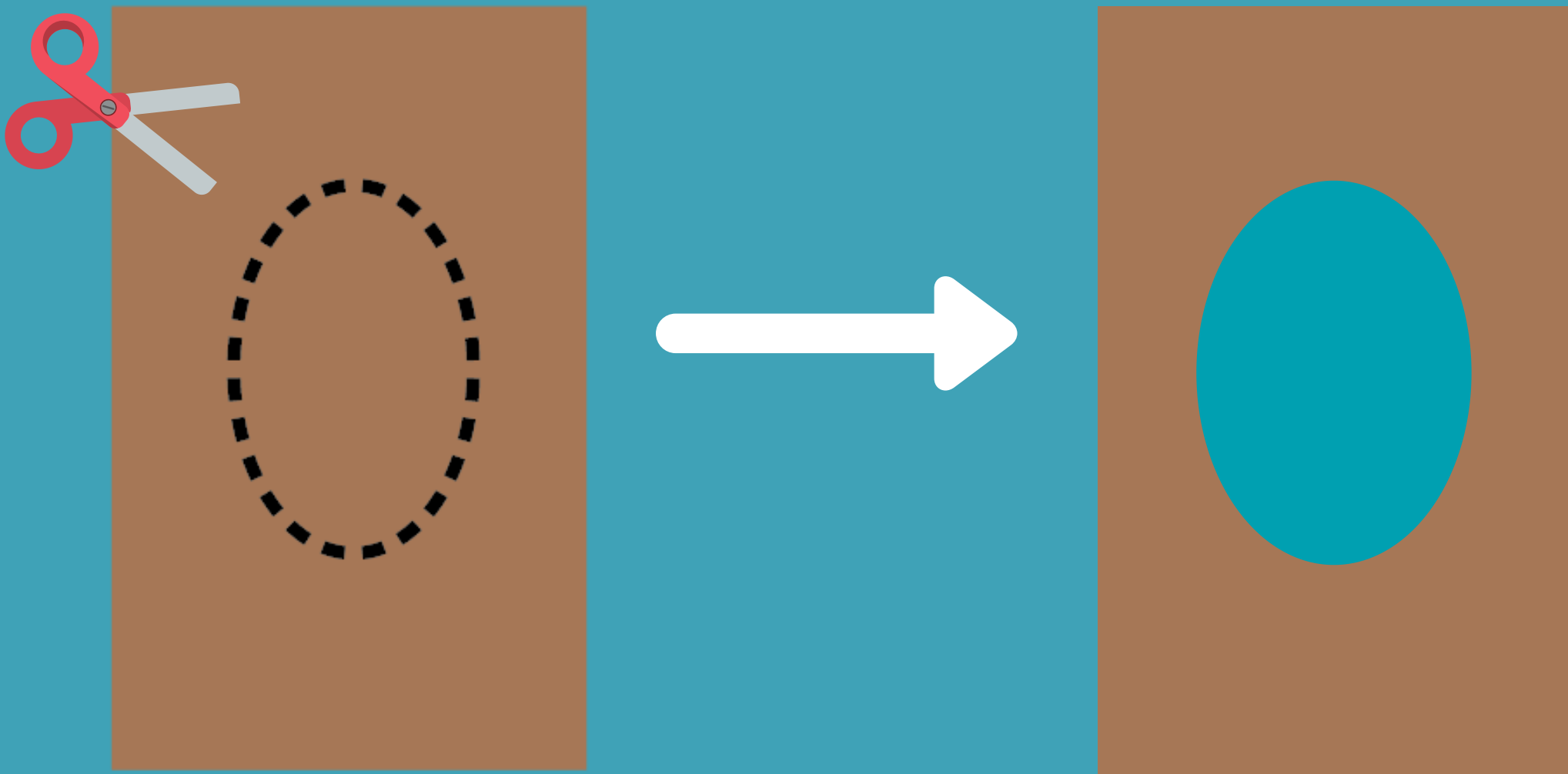


Shoe Box Guitar

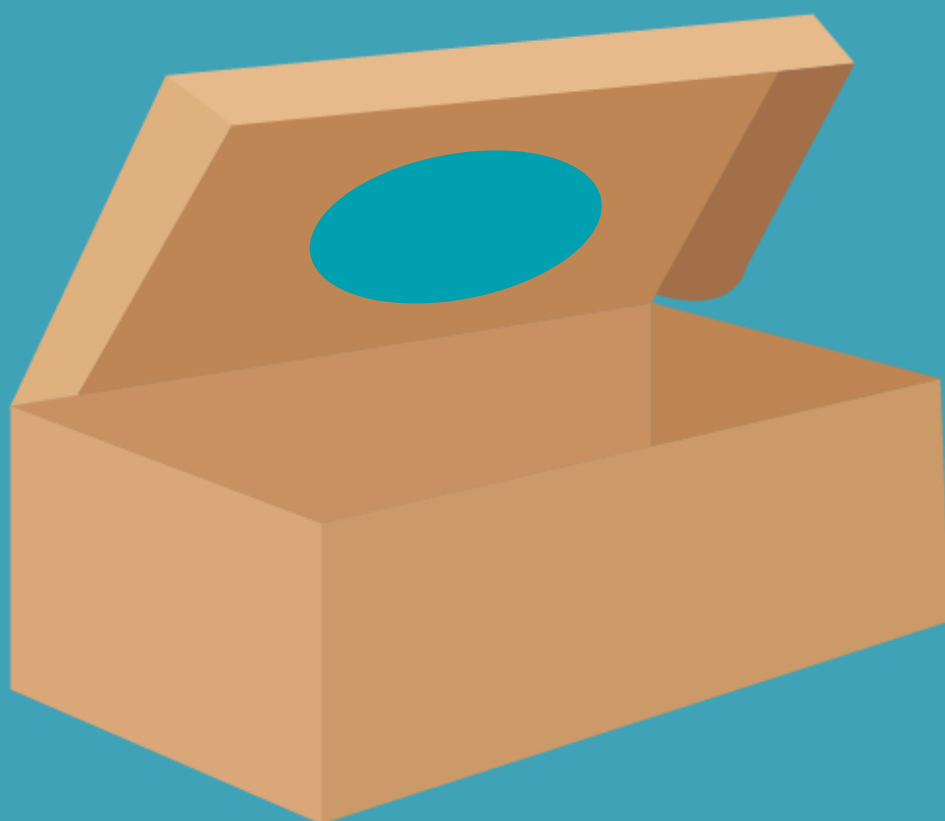
Supplies

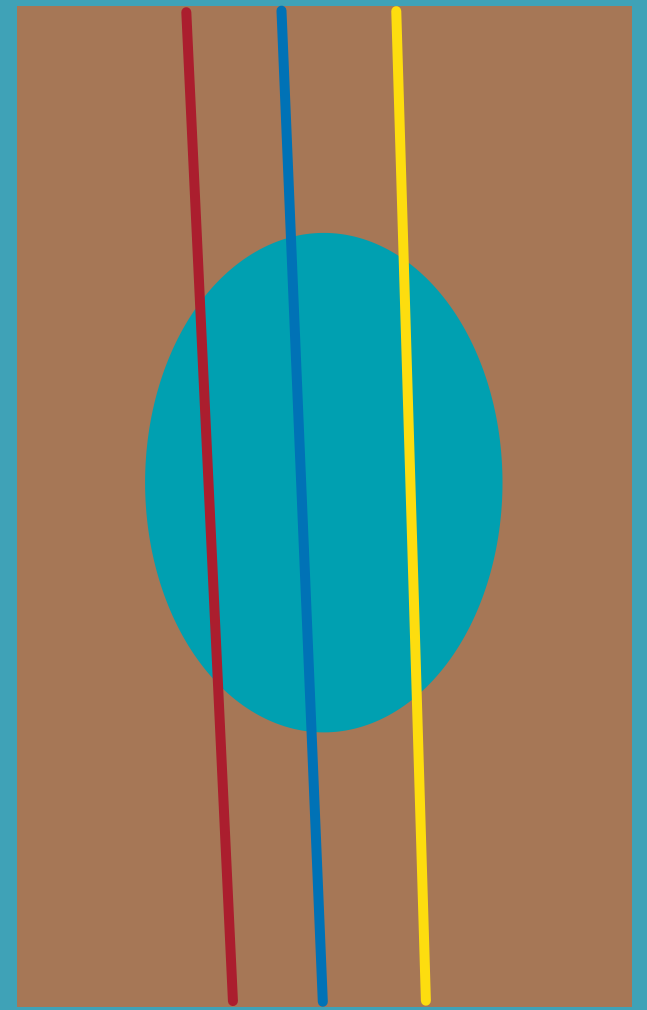
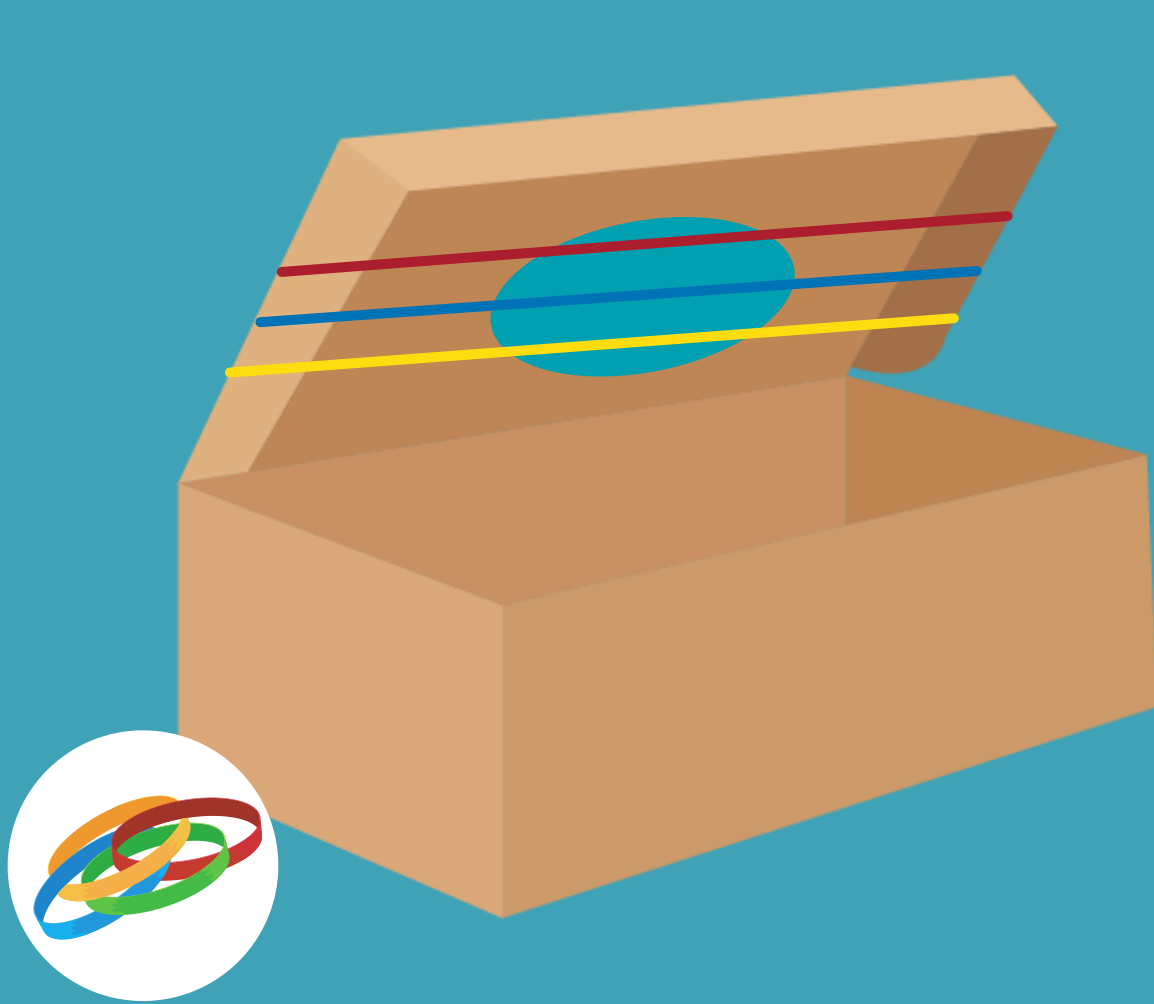
- **Shoe Box**
- **Rubber Bands**
(Different Widths and Sizes)
- **Scissors**
- **Paper Towel Roll** (Optional)
- **2 Pencils**



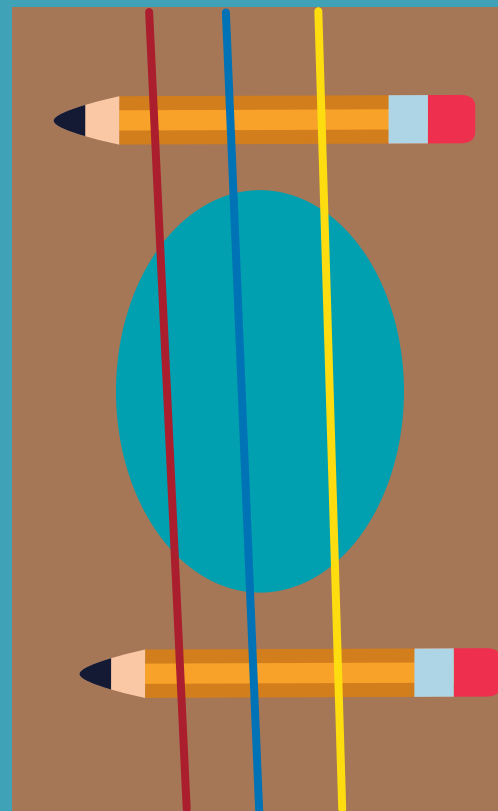
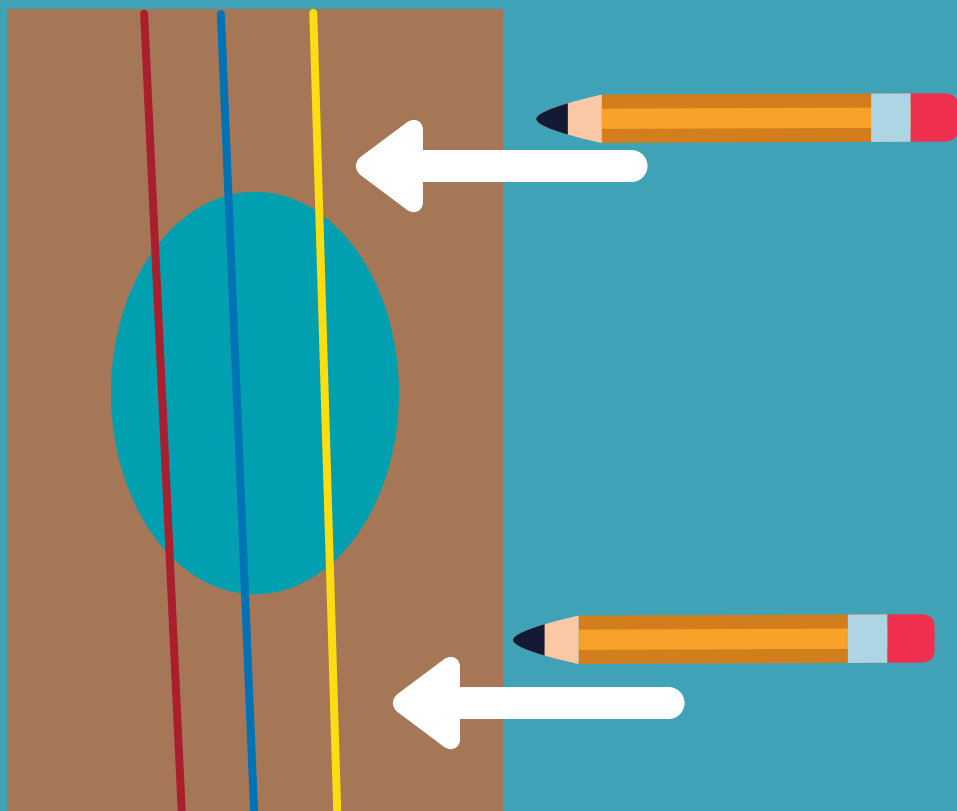


Trace and cut circle into shoe box

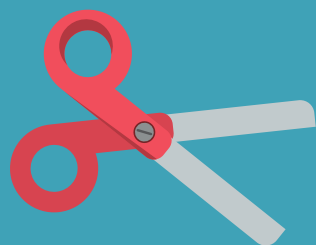
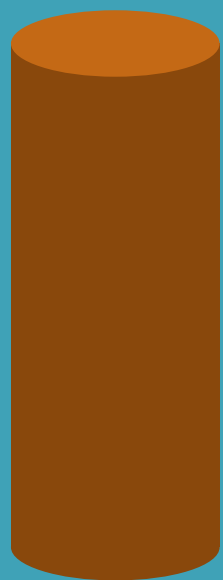




Wrap rubber bands around the top of the shoe box, across the cut hole.



Wedge pencils underneath the rubber bands, on each side of the hole.



**Optional -
Add a paper towel tube neck**

**Using your fingers, strum or
pluck the rubber band strings
to play your guitar!**

